

# CruzerLock™

## How to protect your files on Cruiser

---

### Introduction...

CruzerLock makes it possible for you to lock/encrypt files on your Cruiser so that others can't view them. In just a few simple steps, CruiserLock provides complete encryption of the files you want to keep private.

- The CruiserLock application is specifically designed for your Cruiser unit and will only work if Cruiser is plugged into your computer's USB port.
- The CruiserLock application runs under Microsoft® Windows® 98/98SE, 2000, ME & XP.
- The CruiserLock application does not run under the Apple® Macintosh® OS.
- Currently, CruiserLock is only written for the English language.

### Installing...

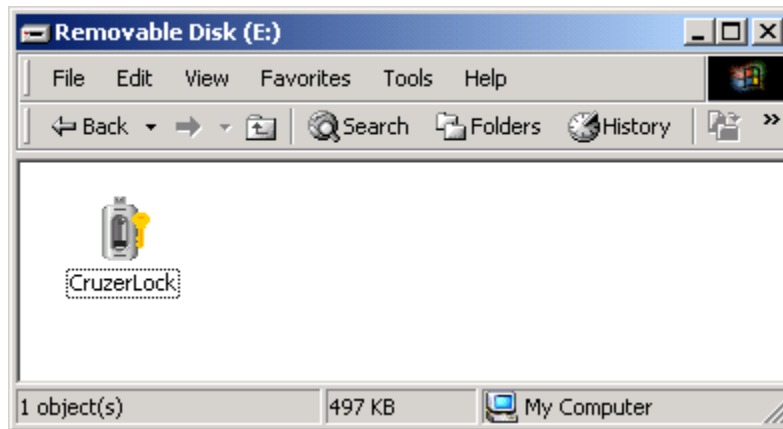
The CruiserLock application is included on the Installation CD that came with the Cruiser unit.

1. Connect Cruiser to the USB port on your computer.
2. Put the Cruiser Installation CD into the CD-ROM on your computer.
3. In the Windows Explorer window, double-click on the My Computer icon.
4. Double-click on the icon that represents your CD-ROM drive.
5. Click and drag the CruiserLock application from the CD to the Cruiser drive icon.

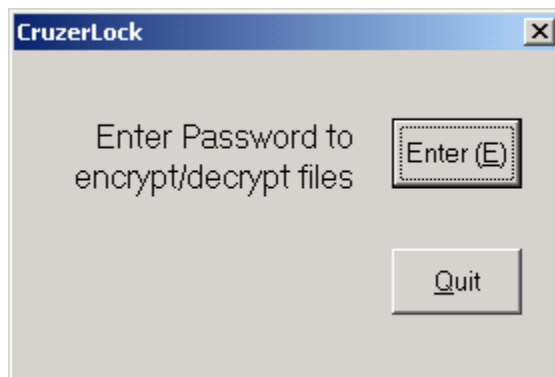
## Starting ...

Start the CruiserLock application:

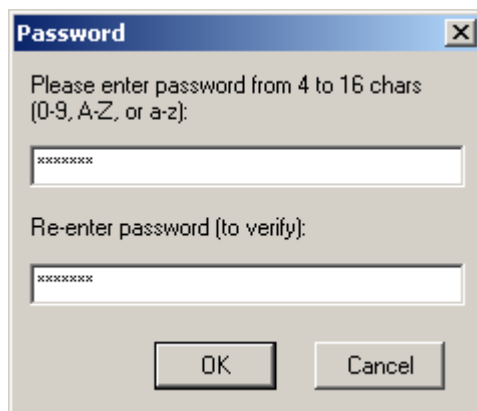
1. On your Cruiser, double-click the CruiserLock icon.



The first CruiserLock window opens.



2. Click Enter to proceed or Quit to exit.



## Starting ...

3. Enter a password that is between 4-16 alphanumeric characters.
  - Choose a password you can easily remember.
  - **IMPORTANT:** IF YOU FORGET YOUR PASSWORD YOU WILL NOT BE ABLE TO UNLOCK FILES.
4. Re-enter your password to verify.
5. Click OK. The CruiserLock window opens.

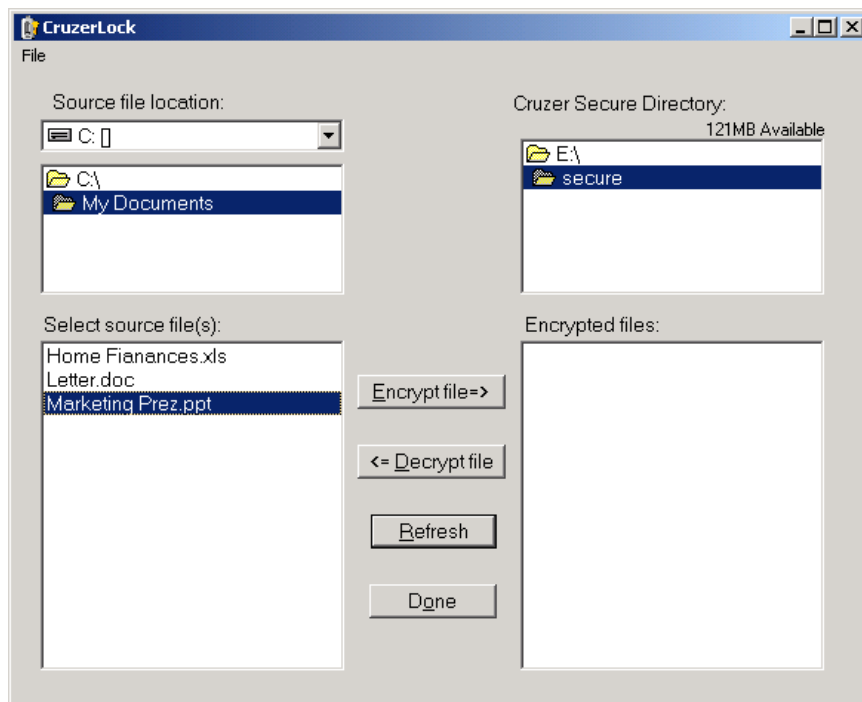
## Locking ...

You can lock/encrypt any file on Cruiser except the application itself.

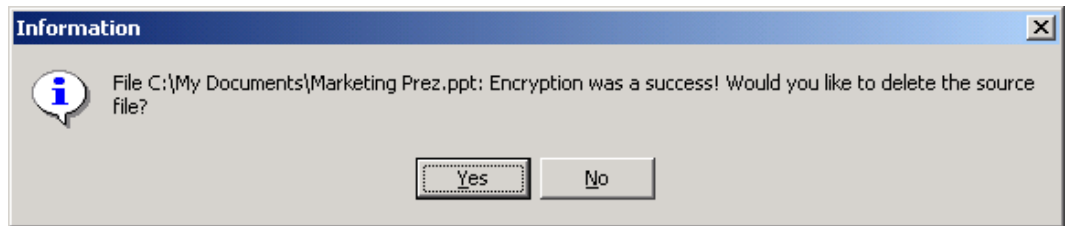
■ **VERY IMPORTANT:** DO NOT ENCRYPT THE SECURITY APPLICATION "CRUZERLOCK.EXE"

To encrypt files on Cruiser:

1. Select the drive that has the file you want to encrypt
2. Click on the file you want to encrypt
3. Click Encrypt File.



## Locking ...



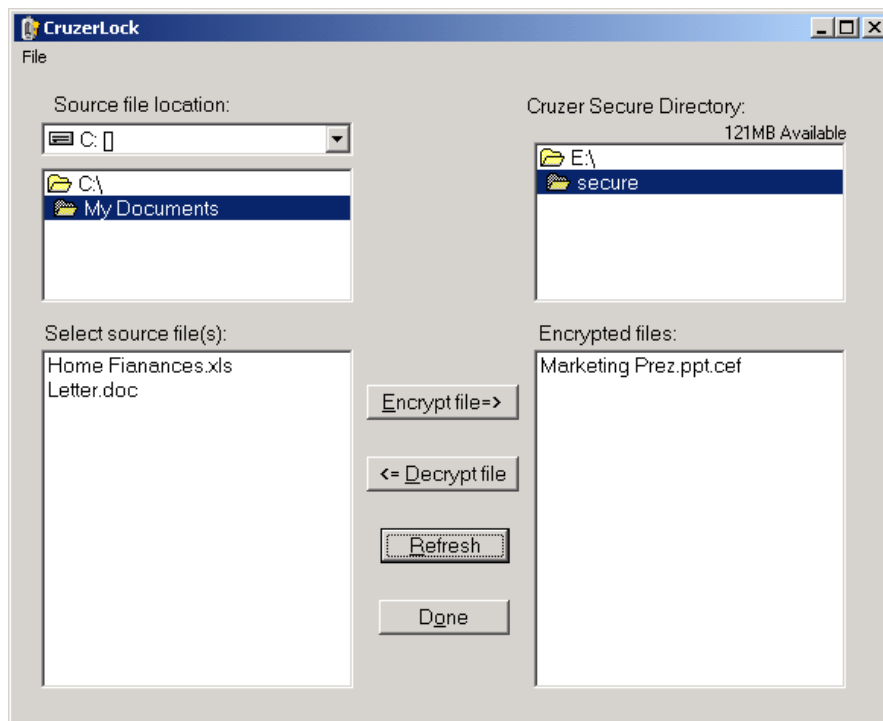
An information window confirms that the file was successfully encrypted and asks if you want to delete the original file.

**IMPORTANT:** DELETING THE ORIGINAL FILE PERMANENTLY REMOVES THE FILE FROM ITS ORIGINAL LOCATION.

IF YOU FORGET YOUR PASSWORD YOU WILL NOT BE ABLE TO DECRYPT THE FILE.

4. Click Yes to delete the original file. Click No if you want to keep an unencrypted version of the file on your original drive.


The encrypted file now appears on the right side of the application window in a new Secure directory on Cruiser.

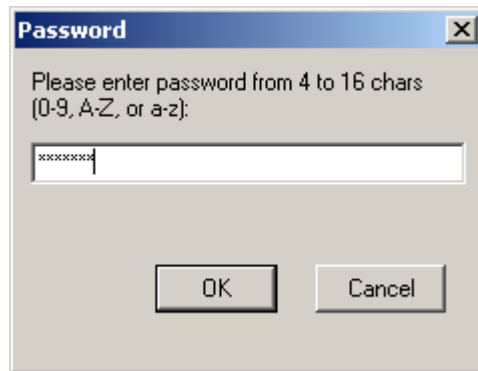


5. Click Done to close the CruiserLock window if you are done encrypting files.

## Unlocking ...

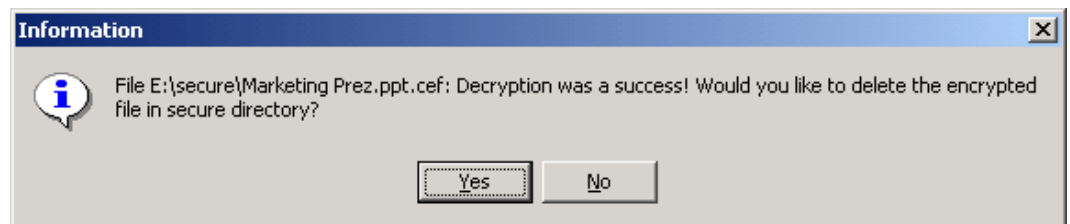
To unlock/decrypt files on Cruiser:

1. On Cruiser, double-click the CruiserLock icon.   
The password window opens.
2. Click Enter Password. The CruiserLock window opens.



3. Enter your password and click OK. (This is the same password you entered when you encrypted your files. See Locking above)
4. In the Secure directory on the right side of the window, click on the file you want to decrypt.
5. Click file decrypt.

**IMPORTANT:** IF YOU DID NOT DELETE THE ORIGINAL FILE (SEE LOCKING SECTION ABOVE), AND YOU ARE DECRYPTING THE FILE TO THE SAME LOCATION AS THE ORIGINAL FILE, THEN YOU WILL BE ASKED IF YOU WANT TO OVERWRITE THE ORIGINAL FILE. CLICK YES IF YOU WANT TO OVERWRITE THE ORIGINAL FILE OR CLICK NO IF YOU DO NOT WANT TO PROCEED.



An information window confirms that the file was successfully decrypted and asks if you want to delete the encrypted file.

**IMPORTANT:** DELETING THE ENCRYPTED FILE PERMANENTLY REMOVES THE FILE FROM CRUZER'S SECURE DIRECTORY.

6. Click Done to close the CruiserLock window if you are done decrypting files.