

How to ISP under Windows

Support Controller Version:PS1001F, PS1011F, PS1001G, PS1011G, PS1006A

Step 1: Please install the driver under Windows98

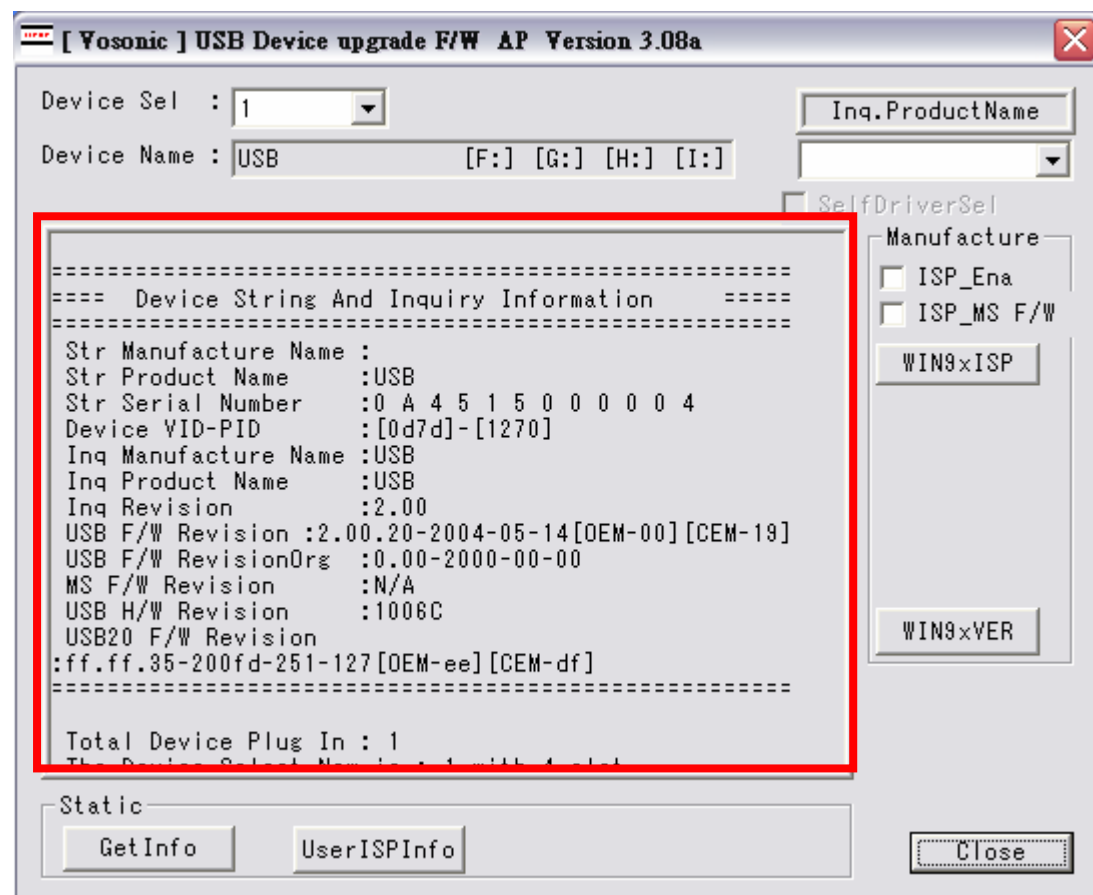
Please remove the driver under Windows 2000 SP1, SP2.

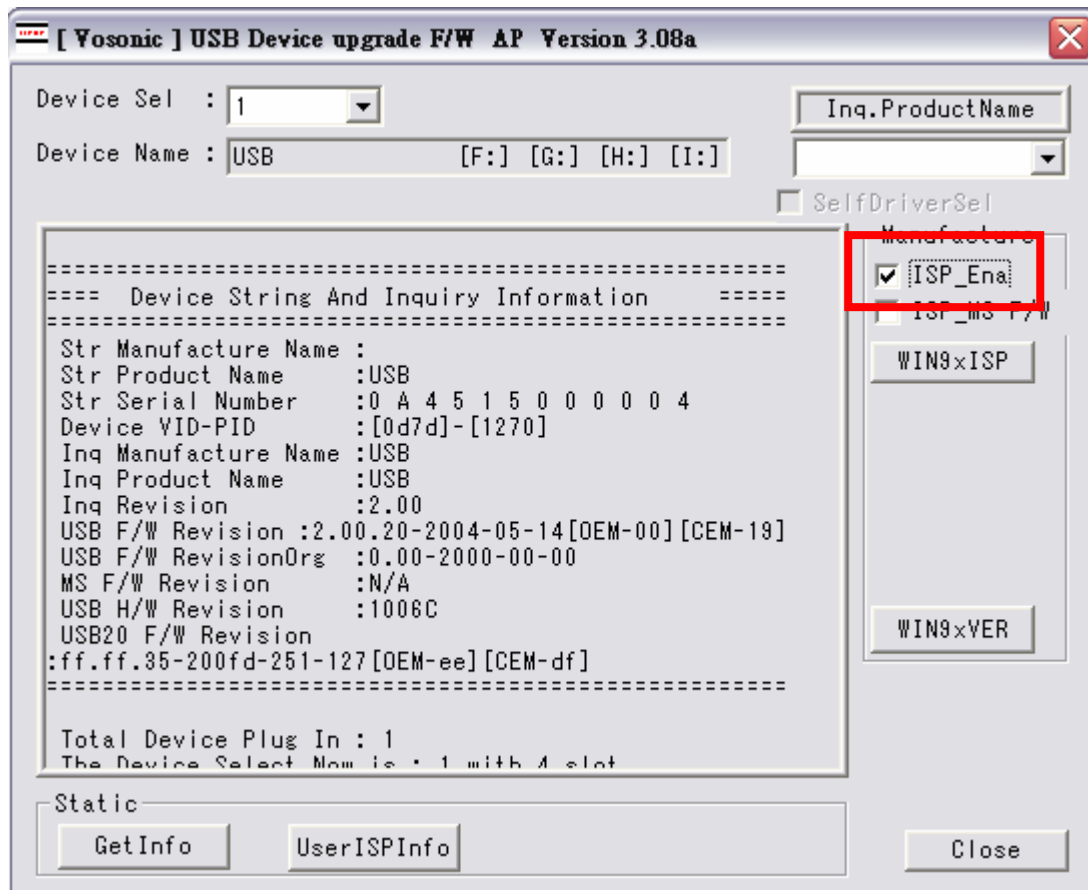
Step 2: Reboot as requested to complete the installation procedure

Step 3: Insert device into USB port

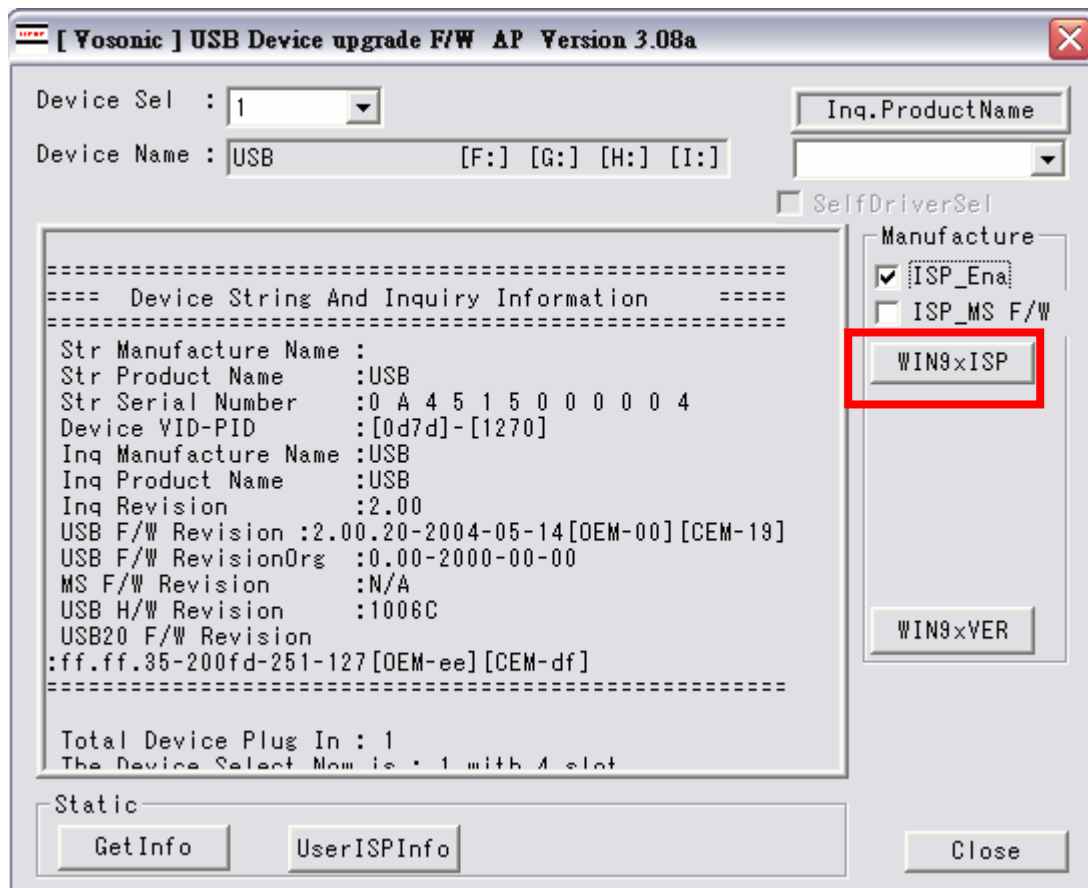
Step 4: Double click “[Ps0Av38am.exe](#)”to run the ISP program.

You should see the following screen.



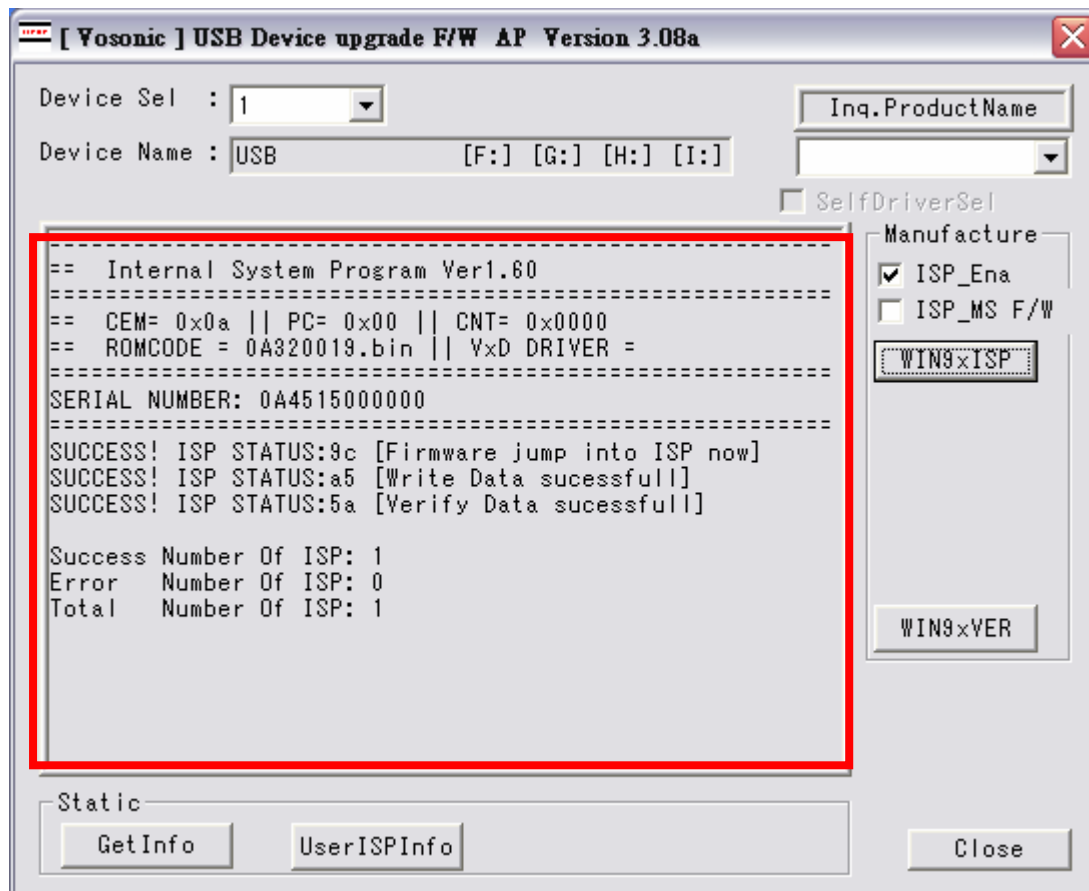


Step 5: Tick “ISP_Ena”



Step 6: Press “WIN9xISP” to begin ISP.

When finish, some message will display.



Step 7: If you want to check if the correct information has been ISPed, then remove the device from USB port and then re-insert into the USB port. Windows will detect new hardware, wait till it finish detecting and icon has shown up in “My Computer”.

Step 8: Please press the Reset button to finish the process.